

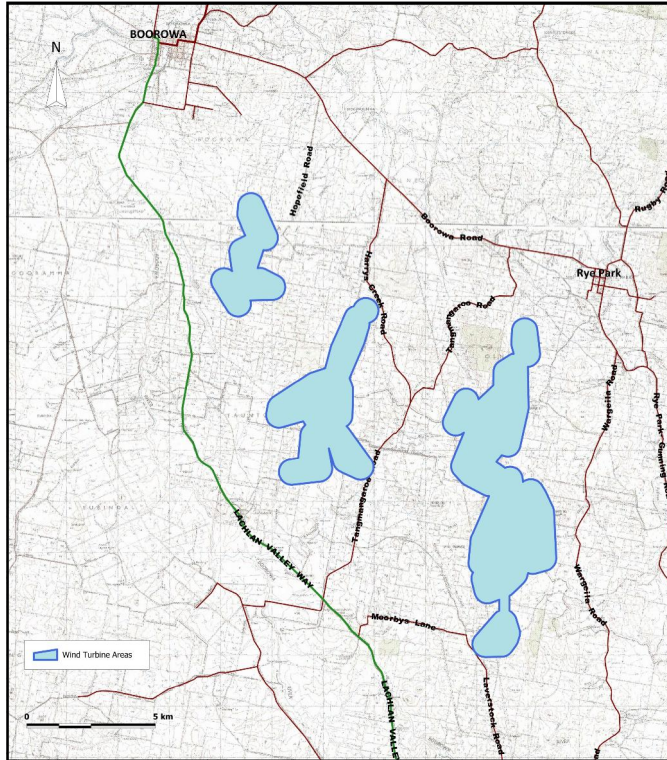


Bango Wind Farm

February 2013

Newsletter #2

Bango Wind Farm Community Consultation Committee and Environmental Assessment Update



Wind Prospect CWP Pty Ltd is continuing to assess the potential for a wind farm on rural land to the south of Boorowa and Rye Park, New South Wales. The proposed Bango Wind Farm project could accommodate upwards of 100 wind turbines and produce in the order of 700 gigawatt hours (GWh) of clean, renewable energy, enough to supply the equivalent demand of 100,000 average homes across Australia¹.

We continue to seek interested parties willing to participate in the Community Consultation Committee. This is an ideal opportunity to feed comment back to us about the project and distribute information to neighbours.

The Environmental Assessment is also well underway, focusing on key surveys and assessments required to ensure the project has minimal impact on the local area.

COMMUNITY CONSULTATION COMMITTEE

Wind Prospect CWP is still attempting to establish the Bango Wind Farm Community Consultation Committee (CCC), aiming to have the inaugural meeting sometime within the next 2-3 months. So far, there has been limited interest in participating, so if you or your neighbours would like to get involved please complete the attached Expression of Interest form and send it through!

The CCC will provide a forum for open discussion between Wind Prospect CWP, the Community, local Government and other stakeholders. In particular, the CCC will provide further opportunity to:

- Establish good working relationships between the proponent and the community;
- Provide for ongoing communication and information dissemination;
- Discuss community concerns and resolutions; and
- Advise on the allocation of the Community Fund.

Local Council nominations have been received and accepted, and we look forward to establishing the CCC very shortly to continue to develop the project, and work through issues and opportunities as they arise.

Closing date for this 3rd call for Expressions of Interest is the 31st March 2013.

In parallel with the CCC, Wind Prospect CWP are continually seeking input from the local community and encourages anyone with input, questions or feedback to contact us. There are currently two surveys about the project that can be accessed via the project website (www.bangowindfarm.com.au) or by contacting the office.

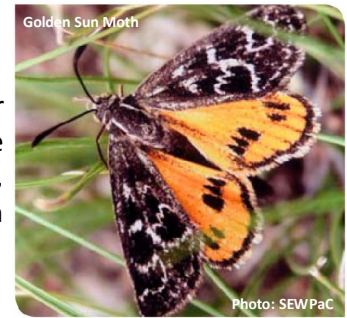
¹ based on an indicative capacity factor of c.40% from 200 MW installed, and an average household energy use of 6.926MWh p.a. (Electricity Gas Australia 2008 publication from the Electricity Supply Association of Australia ESAA)

BANGO WIND FARM ENVIRONMENTAL ASSESSMENT

Work on the Environmental Assessment is proceeding well, with data being collected for a number of studies from across the site.

Ecology

Our consultants have been collecting data on site over the spring / summer season, ensuring that the wind farm has minimal impact on flora and fauna. We are being careful to minimise impacts on threatened and endangered species, being mindful of the presence of Superb Parrot, Gold Sun Moth and Box Gum Woodland.



Cultural Heritage

Indigenous and non-indigenous heritage has been assessed, with our consultant undertaking a walkover of the entire site looking for heritage items. Survey work benefitted from the involvement of local Aboriginal groups. Very few sites were discovered, limited to a few artefact scatters which have been documented and avoided where possible, in line with State and Federal regulations.

Noise

Background noise levels were monitored at thirteen residences around the wind farm site. The data was used in an assessment of the wind turbine layout and turbine locations have been removed or modified to ensure that there will be no adverse impact from the operation of the wind farm.

Landscape and Visual

Various locations have been considered for the creation of photomontages to show how the wind farm will look once it is operational. Key locations, such as Boorowa, Rye Park, the Lachlan Valley Way and other main arterial routes have been used to show how the wind farm will appear, should it be granted consent.

Other Assessments

The Environmental Assessment requires several other reports considering the impact of the project on the local area. These include Traffic and Transport, Fire and Bushfire Risk, Water, Communications, Aviation and Electro-magnetic Interference assessments. The results of these reports will feed into the design and modification of the wind turbine layout prior to submission for planning consent.

USEFUL WEBSITES

- Bango Wind Farm: www.bangowindfarm.com.au
- Wind Prospect: www.windprospect.com
- Continental Wind Partners: www.continentalwind.com
- Clean Energy Council: www.cleanenergycouncil.org.au
- BioBanking: www.environment.nsw.gov.au/biobanking
- Draft NSW Planning Guidelines: Wind Farms: www.planning.nsw.gov.au



HOW TO CONTACT US



Please post/email/fax your comments to us via:

- Post: Wind Prospect CWP Pty Ltd, PO Box 1708, Newcastle, NSW 2300
- Email: adrian.maddocks@wpcwp.com.au
- Fax: 02 4926 2154 Phone: 02 4013 4640
- Online: www.bangowindfarm.com.au

